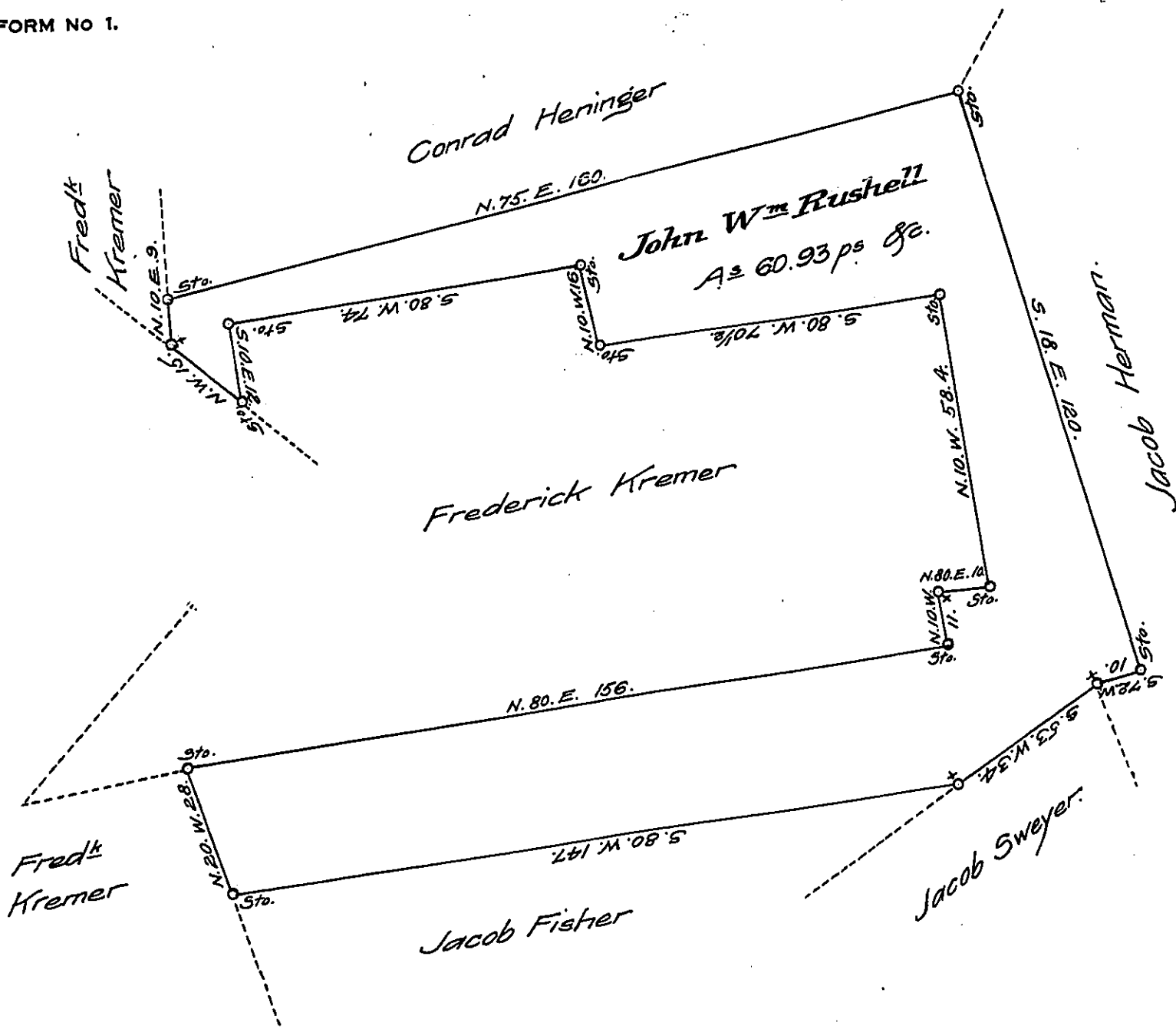


FORM NO 1.



Situate in Maxetawny township, Berks County Cont<sup>s</sup> Sixty  
 acres, Ninety three perches, and allowance of 6  $\frac{1}{2}$  Ct. Surveyed in pur-  
 suance of an Application N<sup>o</sup> 3266 dated the 2<sup>d</sup> day of May 1768 granted  
 to John W<sup>m</sup> Rushell.

Copied from Henry Vanderslice's draft.

September 18<sup>th</sup> 1828.

Matthias S. Richards D.S.

Gabriel Hiester, Esquire)  
 Surveyor General }

IN TESTIMONY that the above is a copy of the original remaining on file in  
 the Department of Internal Affairs of Pennsylvania, made  
 conformably to an Act of Assembly approved the 16th day of  
 February, 1833, I have hereunto set my Hand and caused  
 the Seal of said Department to be affixed at Harrisburg,  
 this first day of September 1908.

*Henry Howard*  
 Secretary of Internal Affairs.